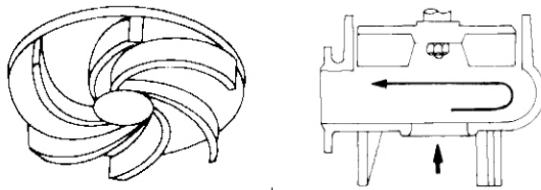




JS-Sv Series Single Phase Vortex Impeller Pumps

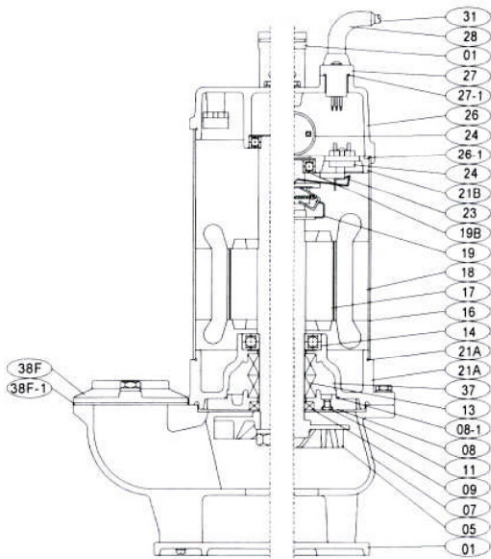


JS-SV series are heavy duty submersible sewage vortex impeller pumps allowing mud, raw sewage, viscous liquids, wood chips and other soft solids to be passed through the pump body to waste.

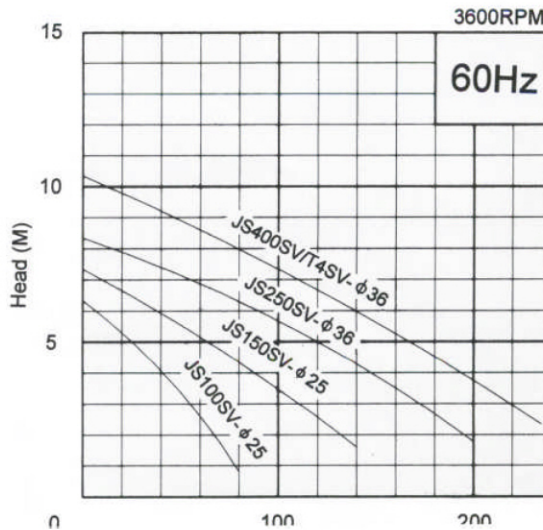
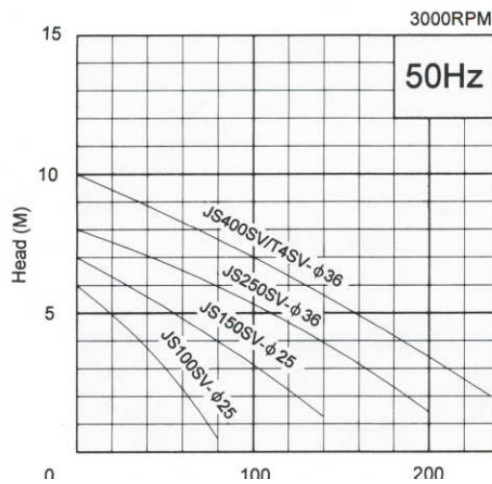
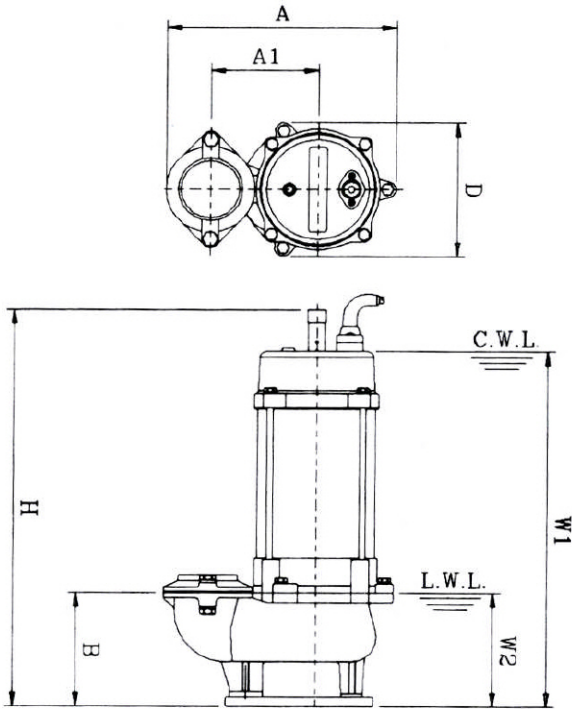
- Supplied as a free standing pump. Guide rails available for some models
- Cast iron pump body, impeller, lower motor bearing/seal housing and motor top cover.
- Stainless steel shaft and motor casing capable of with standing rough handling and sandy water pumping.
- Twin mechanical seals, the lower seal is made of silicon carbide and the upper seal carbon/ceramic. An extra lip seal is installed to help prevent abrasives such as sand, dirt and silt from entering the seal chamber.
- Complete with 10 metres of power cable.
- Hose tails are supplied with all models.
- Floats available as extras (AG22 up to 400w, MAC3 up to 750w).
- Internal Thermal Protection
- 3 Phase available as JST range

MODEL	WEIGHT	DIMENSIONS	FLOW / HEAD	POWER	SOLIDS DIAMETRE
	Kg	H x W x L mm	LM/ HM	kW	MAX SOLIDS
JS-400 SV MAN 230v 2"	17	460 x 145 x 215	240/8	0.4	38mm
JS-400 SV AUTO 230v 2"	17	460 x 145 x 215	240/8	0.4	38mm
JS-400 SV MAN 110v 2"	17	460 x 145 x 215	240/8	0.4	38mm
JS-400 SV AUTO 110v 2"	17	460 x 145 x 215	240/8	0.4	38mm
JS-650 SV MAN 230v 2"	21	480 x 160 x 230	300/15	0.75	48mm
JS-650 SV AUTO 230v 2"	21	480 x 160 x 230	300/15	0.75	48mm
JS-650 SV MAN 110v 2"	21	480 x 160 x 230	300/15	0.75	48mm
JS-650 SV AUTO 110v 2"	21	480 x 160 x 230	300/15	0.75	48mm
JS-750 SV MAN 230v 3"	32	530 x 165 x 345	500/9	0.75	48mm
JS-750 SV AUTO 230v 3"	32	530 x 165 x 345	500/9	0.75	48mm
JS-750 SV MAN 110v 3"	32	530 x 165 x 345	500/9	0.75	48mm
JS-750 SV AUTO 110v 3"	32	530 x 165 x 345	500/9	0.75	48mm
JS-1500 SV MAN 230v 3"	44	610 x 190 x 370	750/10	1.5	58mm
JS-1500 SV AUTO 230v 3"	44	610 x 190 x 370	750/10	1.5	58mm

1 PHASE



No.	Description	No.	Description
01	STRAINER	21A	MOTOR BOTTOM COVER
05	IMPELLER	21A-1	ORING
07	PUMP HOUSING	21B	MOTOR UPPER COVER
08	OIL CHAMBER	23	OVERLOAD PROTECTOR
08-1	OPING	24	CONDENSOR
09	LIP SEAL (LOWER)	26	UPPER COVER
11	PLUGS	26-1	ORING
13	MECHANICAL SEAL	27	CABLE GLAND
14	BEARING (BOTTOM)	27-1	ORING
16	MOTOR CASING	31	CABLE
17	ROTOR SHAFT	34	HANDLE
18	STATOR	37	OIL
19	GOVERNOR SWITCH	38F	OUTLET
19-B	CENTRIFUGAL	38F-1	GASKET
20	BEARING (UP)		



Pump Type	Discharge bore	Pump section						Operating water level	
		d	A	A1	B	D	H	W1	W2
JS400 SV	2"(50)	215	110	115	135	410	350	125	
JS650 SV	2"(50)	228	110	118	153	430	360	130	
JS750 SV	3"(80)	280	135	145	170	495	445	145	
JS1500 SV	3"(80)	395	205	230	195	600	545	200	