



Beta-Mj-Sdc

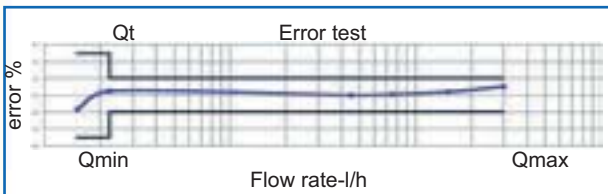
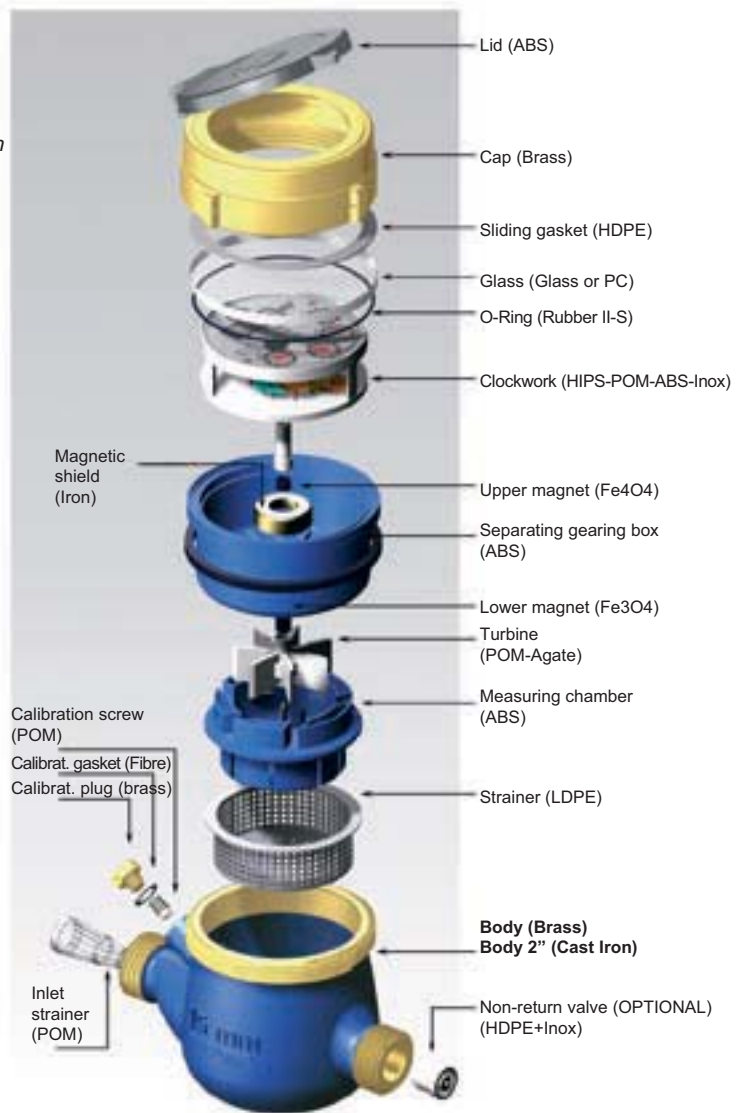
Multi-jet type water meter
super dry register

Multi-jet type water meter - Dry Dial

An inferential multi-jet type meter for cold water with a direct reading register.
 "Superdry" display version with it's register mechanism mounted in a vacuum sealed dry compartment coupled by magnetic linkage to the impellar below, which rotates in a measuring chamber with a double row of tangentially arranged jets which direct the water flow. The chamber is made of self cleaning synthetic resin approved to . BS 6920. A version for warm water up to 90° C is available.
 A version suitable for telemetering complete with a pulse output is also available, as are data loggers and remote displays.

THE BETA-MJ-SDC WATER METER OFFERS THE FOLLOWING ADVANTAGES:

- The direct reading register operates in a dry compartment, which is under vacuum conditions, as a result the register always remains perfectly clear. Easily readable in any working conditions is guaranteed
- The meter is suitable for operation in hard water and under conditions where deposits may occur, and also if there is sand in suspension.
- A long operating life is guaranteed due to robust construction, providing maximum protection, and also to the very low number of impellar revolutions per cubic meter of water flow of this model and to the selection of the best quality materials.
- A suitable shield protects the magnetic drive against any interference from unwanted magnetic external fields.
- Excellent in service performance, EEC approval 75/33 class B.
- The meter can be installed in horizontal, vertical and inclined pipes.



TECHNICAL DATA AND DIMENSIONS (Class B)

GAUGE	mm	15	20	25	30	40	50*
	inches	1/2"	3/4"	1"	1.1/4"	1.1/2"	2"
Qmax	m ³ /h	3	5	7	12	20	30
Qn	m ³ /h	1,5	2,5	3,5	6	10	15
Qt	l/h	120	200	280	400	800	3000
Qmin	l/h	30	50	70	100	200	450
PN	bar	16	16	16	16	16	16
Pressure loss (at Qmax)	bar	<1	<1	<1	<1	<1	<1
Sensitivity	l/h	<10	<15	<20	<20	<40	<40
Minimum reading	lt	0,05	0,05	0,05	0,05	0,5	0,5
Maximum reading	m ³	99.999	99.999	99.999	99.999	999.999	999.999
Weight (with connections)	Kg	1,4	1,7	2,6	3,10	5,20	8,50
Length L	mm	110-145-165-170	190	160-260	160-260	200-300	300
Width W	mm	99	99	104	104	125	125
Height H	mm	107	109	115	120	148	173

*2" Body in cast iron - Available also in a flanged version

