



Alfa-Sj-Sdc

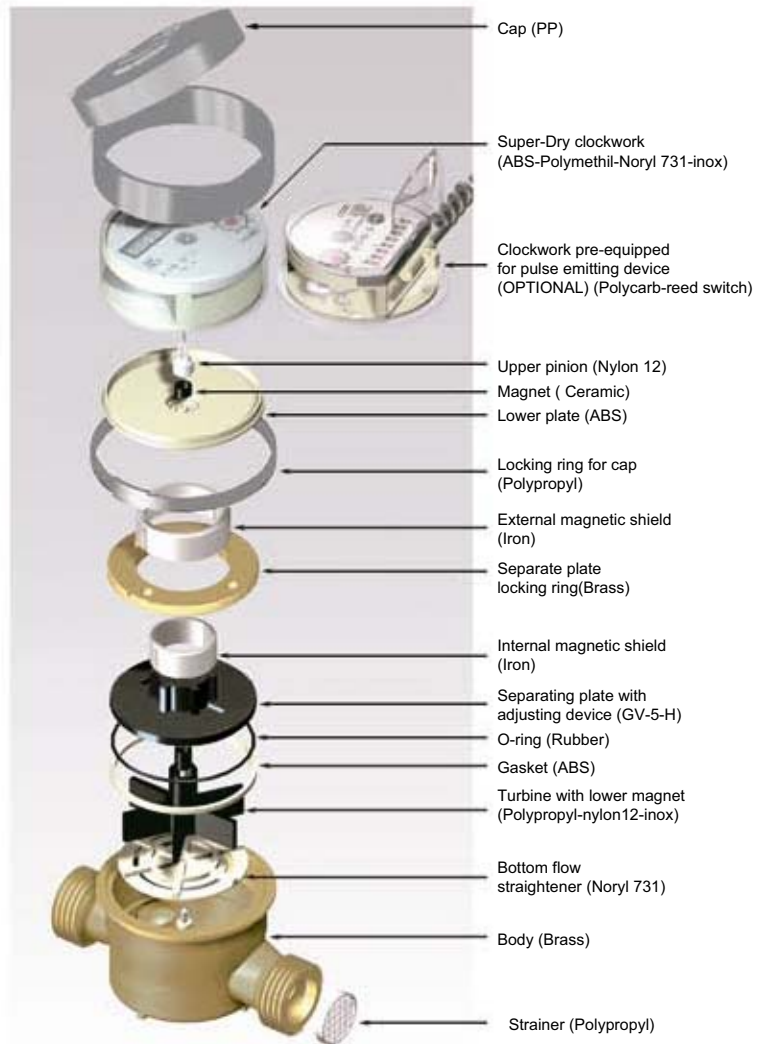
Water meter single jet
360° rotary dry dial

Single jet cold water meter - Secondary Billing 360° rotary dry dial

Cold water turbine meter, "SUPERDRY" 360° rotary clockwork, non wetted parts display. Direct reading via eight counters. The movement of the metering mechanism (a single tangential Impellar, jet driven) is transmitted to the display capsule by means of a special magnetic linkage which is protected against unwanted external magnetic fields. The small volume within the measuring chamber and the special junction ring of the capsule ensure expansion absorption and therefore frost resistance of the dial. Certified to EEC 75/33 Class B. A version for hot water upto 90° is available. A version for remote reading is also available.

THE ALFA-SJ-SDC WATER METER OFFERS THE FOLLOWING ADVANTAGES:

- Easily read display via 8 counters (5 black for cubic meters and 3 red for the lesser divisions, in a vacuum filled capsule.
- Complete reliability & Security due to the magnetic transmission and to the anti-fraud shielding system.
- Negligible pressure loss.
- Long operational life thanks to the low r.p.m. turbine and to the high quality of the materials.
- The vacuum sealed capsule prevents humidity and mist.
- Easy maintenance.



TECHNICAL DATA AND DIMENSIONS (Class B)

GAUGE	mm	15	20
	inches	1/2"	3/4"
Qmax	m ³ /h	3	5
Qn	m ³ /h	1,5/1,25	2,5
Qt	l/h	120	200
Qmin	l/h	30/25	50
PN	bar	16	16
Pressure loss (at Qmax)	bar	<1	<1
Starting flow	l/h	<10	<15
Minimum reading	lt	0,05	0,05
Maximum reading	m ³	99.999	99.999
Weight (with connections)	Kg	0,65	0,95
Length L	mm	110	130
Width W	mm	72	72
Height H	mm	71	71

