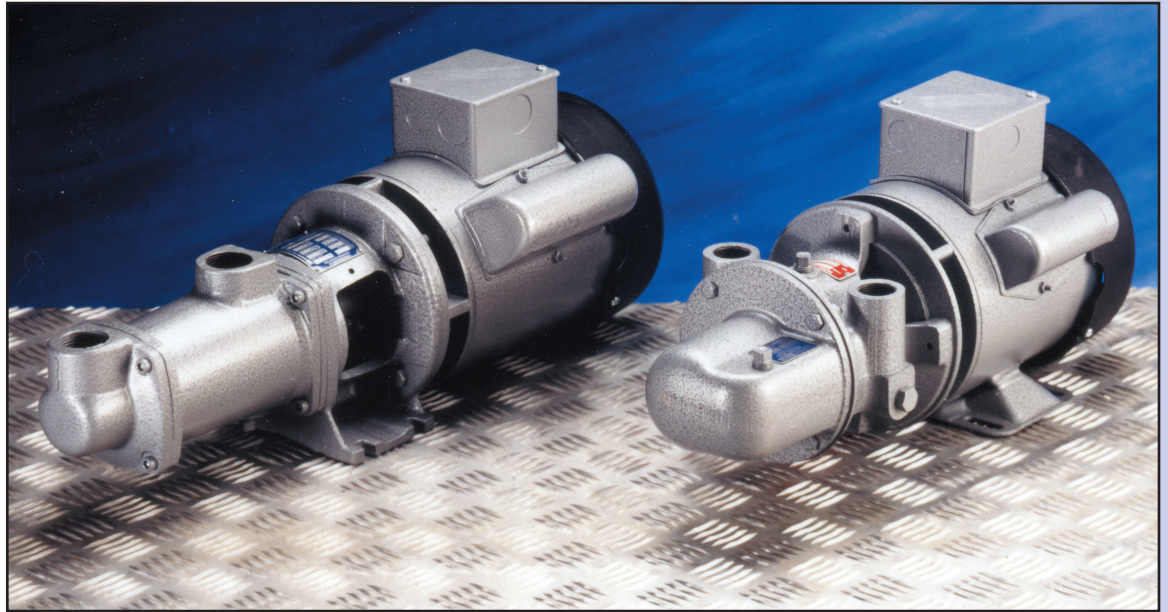


## M Range Pumps



### Performance Details

pump	r.p.m.	0 bar		1.4 bar		2.4 bar		2.75 bar		3.45 bar		Weight kg
		0lb/in <sup>2</sup>		20lb/in <sup>2</sup>		35lb/in <sup>2</sup>		40lb/in <sup>2</sup>		50lb/in <sup>2</sup>		
		l/h	gal/h	l/h	gal/h	l/h	gal/h	l/h	gal/h	l/h	gal/h	
<b>MS</b>	1450	750	165	500	110	409	90	386	85	318	68	16
<b>MM</b>	1450	1590	350	1250	275	1050	231	1000	220	900	198	27
<b>ML</b>	2850	3130	690	2470	543	2040	450	1890	416	1590	350	27

### Suction Lifts

Pump	m	ft
<b>MS</b>	8	26
<b>MM</b>	7.5	25
<b>ML</b>	5.5	17.5

### Materials of Construction

<b>Body:</b>	Close-grained Cast Iron
<b>Rotor:</b>	Stainless Steel
<b>Stator:</b>	Synthetic Nitrile rubber
<b>Shaft Seal:</b>	Mechanical seal type

### Drive Motor Details - IP55 enclosure

<b>MS</b>	- 0.18kW Single/Three Phase	115/230/400V
<b>MM</b>	- 0.37kW Single/Three Phase	115/230/400V
<b>ML</b>	- 0.55kW Three Phase	400V
<b>ML</b>	- 0.75kW Single Phase	115/230V

### Applications

#### Domestic:

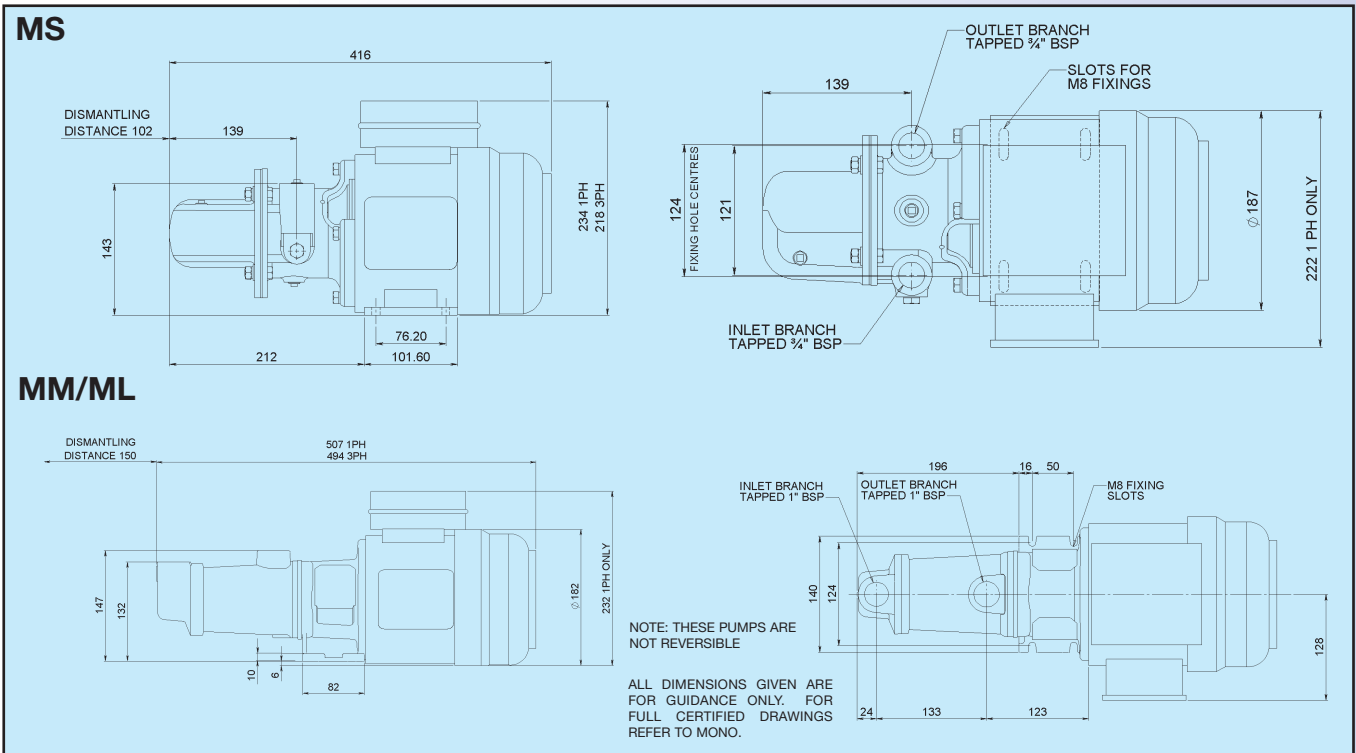
- Cellar Drainage
- Septic tank/cess pit emptying
- Garden sprinkler systems/irrigation i.e. large estates/local authority
- Water supply/sampling from wells, streams and rivers

#### Industrial - General purpose pump for:

- diesel
- water based inks
- vegetable oils
- plating solution
- other non-aggressive chemicals

**Dimensions (mm)**  
(unless stated otherwise)

**All motors supplied with IP55 enclosure as standard**



### The Mono pumping principle

A helical rotor revolves eccentrically within a resilient double helix stator of twice the pitch. The rotor turning within the stator forms cavities which progress uniformly from suction to discharge, carrying the material with them.

### Compact design

In this sense Mono 'M' means 'mini'. The largest model in the range occupies little more than half a cubic foot of space, and requires less than half as much again for in-situ dismantling and maintenance.

### Reliable performance

The Mono M range will satisfy the toughest duties. No trouble. Just like its industrial big brothers that have a long record of success in all sorts of demanding duties, the M range can handle viscous liquids and random solids. It features an abrasion and chemical resistant stator, a precision-engineered stainless steel rotor, a mechanically sealed drive shaft and a close-grained cast iron pump housing.

### Easy maintenance

Space isn't the only economy with the Mono M range. Being simply designed and easily dismantled, maintenance work is minimal, requiring no special skills or tools.

### Positive pumping action

To ensure steady output pressure and non-pulsing flow with minimal slippage, the Mono M pump operates on the progressing cavity pumping principle.

A very useful feature when pumping heating oil to burner nozzles, for example.

### Self-priming

Fully self-priming, the Mono M range pump achieves suction lifts up to 26ft (8m) this means that it can be mounted accessibly and well clear of the liquid level.

### Smooth, silent running

The Mono M's smooth action and resilient rubber stator ensure quiet running - a very desirable feature for domestic installation.

Published information other than marked CERTIFIED does not extend any warranty or representation, expressed or implied, regarding these products. Any such warranties or other terms and conditions of sales of products shall be in accordance with Mono Pumps Ltd standard terms and conditions of sale, available on request.

© Mono Pumps Ltd May 2001. Mono® is a registered trademark of Mono Pumps Ltd, registered in England No. 300721

SLMP/025/01/R6

Mono Pumps Limited, Martin Street,  
Audenshaw, Manchester, England M34 5JA  
Tel. No: +44 (0)161 339 9000 Fax No: +44 (0)161 344 0727  
E-mail: info@mono-pumps.com www.mono-pumps.com



**Mono**®  
National Oilwell Varco