



ITT

Flygt

Flygt Compit pump stations

The complete package for wastewater transport



Engineered for life

'One' pump station for single or multi-family housing

Quick installation

The Compit is a prefabricated pump station for sewage, pressurized sewage systems and groundwater.

Compit is complete on delivery and ready for installation and immediate connection.

The pump station is made of roto-moulded polyethylene and is easy to handle. Its weight excluding the pump is between 181 and 244 kg, depending on the version.

Flexible design

The Compit pump station can be installed at a depth of 1.9 and up to 3 meters using an extension shaft that can be cut to the required length.

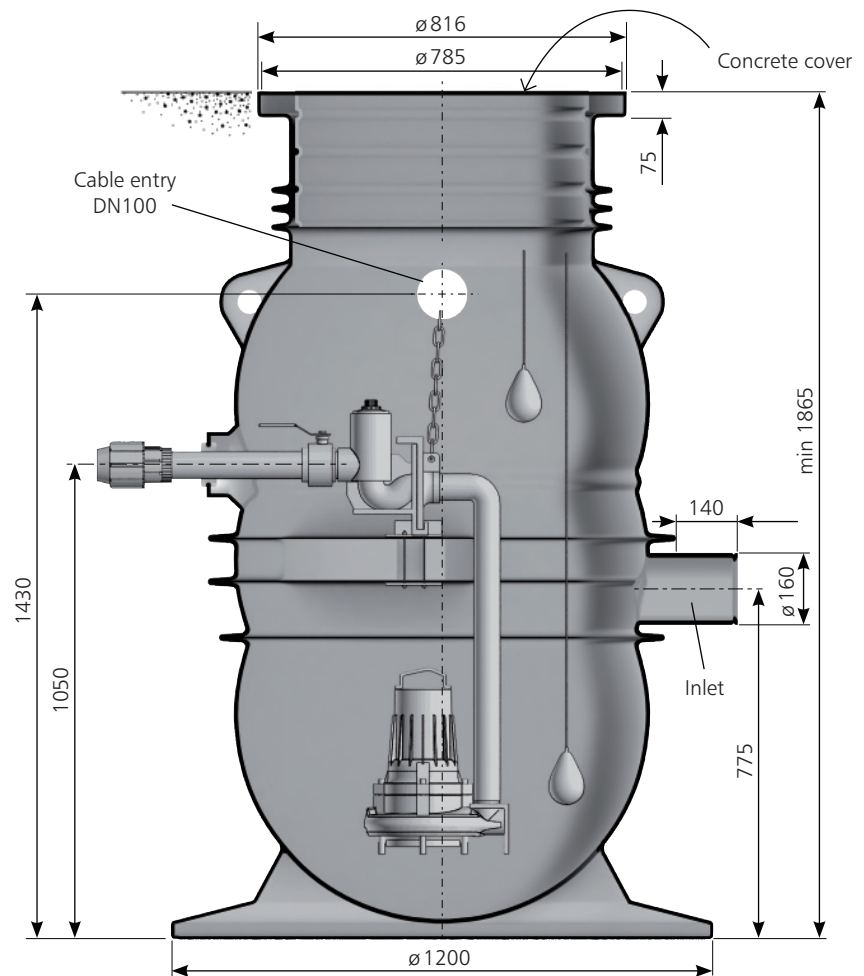
Each pump station can be equipped with one or two pumps for added security of operation.

Reliable operation

The bowl-shaped bottom and smooth inner surface of the pump station act as benching to provide self cleaning during operation.

Technicalities that matter

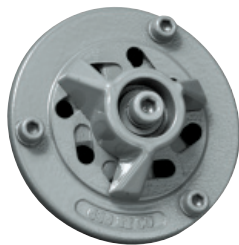
- The pump is easily installed by lowering it onto the discharge connection.
- All internal discharge piping is stainless steel and all fittings are made of surface-treated cast iron.
- Check valve and shut-off valve.
- Concrete cover with lifting handle.
- Loading options of Class A (Pedestrian) or Class B (5 Tonnes).
- Stainless steel lifting chain.
- DN 150 inlet.
- The outlet pipe is equipped with a DN 50 connection.
- Flygt ENM-10 float switches supplied as standard.



The right Flygt pumps and controller for Compit

Grinder pumps with cutting impeller for sewage

Flygt submersible grinder pumps such as the 3068 and 3102 have an impeller unit designed specially for handling the rigours of wastewater pumping. With components made of chromium-alloy and stainless steel, a cutting impeller grinds particles until they measure no more than 5x15 mm, thus eliminating the risk of clogging. The fine slurry can then be pumped through pipes measuring just 50 mm in diameter. These pumps can be run intermittently with up to 30 starts per hour, and can handle liquids at temperatures up to 40°C.



Control panels

Flygt panels have been adapted for controlling pumps with Flygt's ENM-10 level regulators. The units are designed for fast installation and setup. With their steel housing and an exterior finish that has been specified for the tough environment typical in pump stations, these Flygt control panels will provide years of reliable service.



Flygt ENM-10 float switch

The ENM-10 float switch can be used to regulate a liquid level and/or to indicate the presence of liquid in a sump (tank, well, etc.). It is resistant to sewage water, grease, oil and will be reasonably protected against the majority of chemicals.



- Main switch
- Motor protection switch and contactor
- Hand/off/auto mode selector
- Operating and overload indicators
- Temperature relay
- DOL or Y/D starting
- Automatic alternation for dual pumps

Pumps for greywater and groundwater

Flygt submersible 3045 and 3057 sewage pumps are suitable for greywater from baths, showers and washing machines. Both are made of cast iron and highly wear-resistant.

Flygt DX groundwater pumps feature stainless steel pump and motor casings.

All pumps in this range can be supplied with a channel or vortex impeller.





What can ITT Flygt do for you?

As the world's leading supplier of fluid handling technology, ITT Flygt can provide you with complete pumping solutions. From planning and delivery, to installation and after sales service, Flygt's competence is at your service.

Through our products and services; engineers, planners and consultants have access to more than 100 years of experience, assuring you of the most reliable and cost effective operation.

Flygt service and sales facilities are found in more than 130 countries worldwide.

www.flygt.co.uk

Head Office

ITT Flygt Ltd.

Colwick

Nottingham

Tel: 0115 940 0111

Fax: 0115 940 0444

Email: flygtgb@flygt.com

Registered Company No: 479504