

Customer	Project	Page	1 / 1
Customer no.	Project no.	Date	25/04/2013
Contact	Position	SERIES A, AX	
Care of	Location		

A 13-2 11 5743.0150
 Variable speed Mini Energy Pump

Requested data

Flow	0 m³/h
Head	0 m
Fluid	Water, pure
Temperature	20 °C
Working pressure	10 bar

Operating data

Flow	
Head	
Speed stages	
Power input P1	
Permitted working pressure	10 bar
Min. fluid temperature	15 °C
Max. fluid temperature	95 °C

Required working pressure

Values are valid for hot water,
 Altitude 500m above sea level.

Changing of required working pressure at +/- 0.01bar
 per +/- 100m altitude above sea level.

75 °C	95 °C
0.1 bar	0.55 bar

Pump data

Installation dimension	2" x 180
Rated voltage	1~230 V 50
Rated current	0.35 A
Rated power P2	0.050 kW
Insulation class	F
Degree of protection	IP 44

Short-circuit-proof motor doesn't required overload protection.

Materials

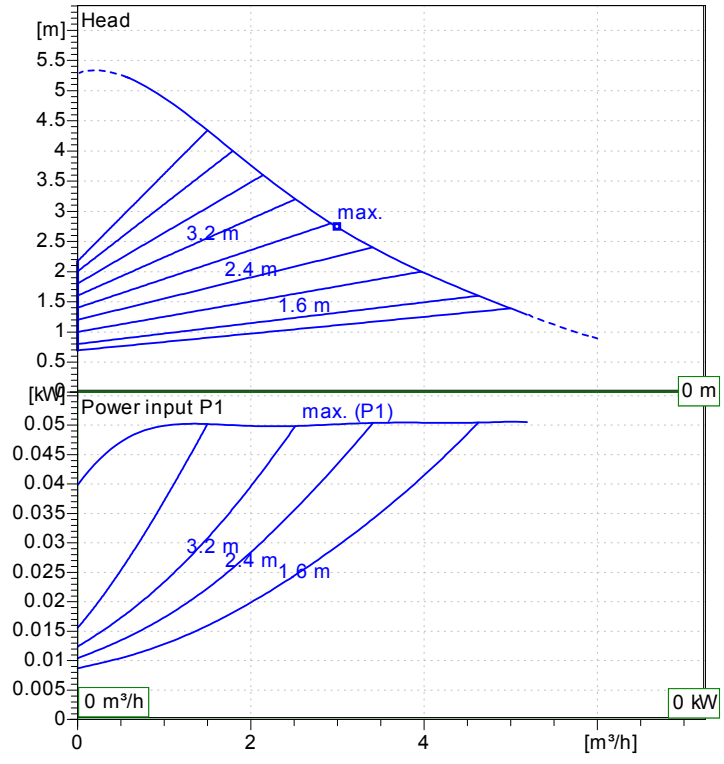
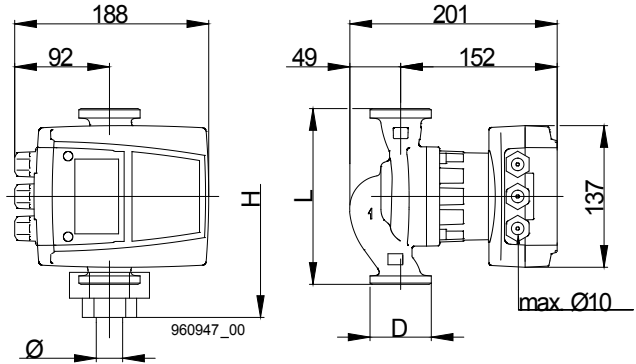
Pump casing	Cast iron
Impeller	Plastic
Can	Chrome-Nickel Steel
O- Ringe	EPDM 75
slide bearing	Ceramic
Shaft	Ceramic

Weight 3.8 kg

51-54: Error message (potential-free closing contact closed if there is a malfunction) contact load max.250V~,1A

51-52: (Zero potential normally - closed contact, open with fault) Contact load max.250V~,1A

Remarks:



Electrical connection

