



Count on it.

DDCWP™ Series

Waterproof, Battery Controller

C O N T R O L L E R S

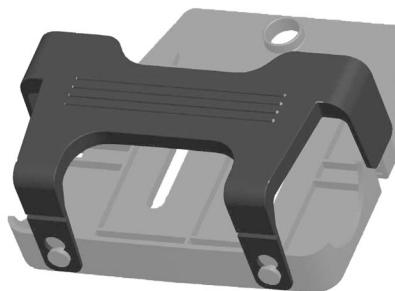
Finally, a battery-powered, water-proof controller that programs just like its A.C. counterpart!

Introducing the DDCWP Series, Toro's waterproof version of the popular DDC™ controller series. Using latching solenoids and battery-power, the DDCWP is 100% waterproof to IP68 standards, making it ideal for mounting in valve boxes or outside.

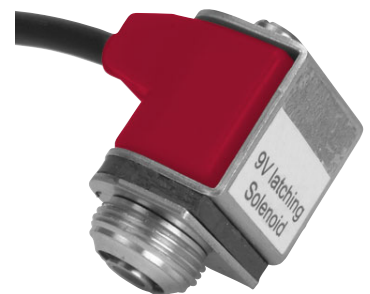
Available in 2, 4, 6, or 8-station models, the DDCWP waterproof controller features an exclusive, patent-pending virtual dial interface that guides a user through simple programming functions. A convenient mounting bracket and waterproof connectors are included with each model.



DDCWP Controller



DDCWP Custom Mounting Bracket



Toro latching solenoid



2, 4, 6 and 8 stations

Features exclusive to DDCWP Controller

- Fully waterproof and submersible to 2m (6'), per IP68 standard
- Convenient mounting bracket included for easy installation in valve boxes or other tight spaces
- Compatible with wired rain sensor
- Waterproof connectors included for all stations, master valve and optional sensor
- 2 x 9V alkaline batteries provide sufficient power to last entire irrigation season; (program retention completely independent using internal coin battery)
- Low battery indicator visible in LCD screen
- Unique power feature verifies sufficient voltage level for turning stations off before turning any stations on

Shared Features of DDC and DDCWP

- Toro exclusive "digital dial" technology simulates the simplicity of a mechanical dial
- Large LCD display
- 3 independent, stacking programs, easily identified within "digital dial" interface
- 3 Start Times per Program
- 1 to 240 minute run times
- Multiple watering days options
 - 365 day calendar
 - 7 day calendar, 14 day interval
 - Odd/Even day watering, with 31st day exclusion
- 0 to 200% Seasonal Adjust (Water Budget) setting in 10% increments, by program
- AM/PM or 24-hour time option
- True manual and manual program start
- Built-in Rain delay
- Programmable Master Valve
- Convenient program review feature

- Easy to read faceplate in English and symbols (*multi-language overlays on A.C. models*)
- 5 Year program retention, with on board coin battery
- Default program if loss of power occurs
- Conforms to electromagnetic compatibility directives (CEE, FCC and C-Tick)

Electrical Specifications

- Operates using 2 x 9V alkaline batteries (not supplied).
- Operates one Toro latching solenoid per station and one latching solenoid equipped master valve
- Maximum distance between controller and a latching solenoid using 1.0 mm² (AWG #18) sized wire: 60 m (197')
- Controller is compatible with all Toro valves accepting latching solenoids (model DCLS or equivalent) and select competitive valve models/ latching solenoids
- Accepts Toro TRS RainSensor™ and other wired rain sensors

Mechanical Specifications

- Weight without 9-volt batteries: 672 grams (23.3 ounces)
- Dimensions: 12.6 x 14.5 x 4.9cm
5" x 5³/₄" x 1¹⁵/₁₆" (H x W x D)
- Operating temperature: 0° - 60°C (32° - 140° F)

Specifying Information

DDCXX X XXX XX

Description	Optional	Stations	Power Supply	Optional
DDC - Digital Dial Controller	WP - Waterproof	2 - 2 station* 4 - 4 station 6 - 6 station 8 - 8 station	120 - 120 V a.c. 220 - 220 V a.c. 240 - 240 V a.c. 9V - 9V batteries*	OD - outdoor AC model DCLS - latching solenoid for WP models

For Example:
When specifying a 4 station DDCWP controller with 9-volt power supply, you would specify:

DDCWP-4-9V and 4 x DCLS

* Available with DDCWP models only



Count on it.

Toro Irrigation Products distributed by:

Lely (UK) Ltd
1, Station Road
St. Neots
Cambridgeshire
PE19 1QH

Tel: (01480) 226800

Fax: (01480) 226881

GB Form Number: LUK200-2730

©2005 The Toro Company – All Rights Reserved.